

PRICE \$5

THE MICHAEL OPPENHEIM COLLECTION  
OF BLACKSMITH AND RELATED  
COPPERS



FOR SALE AT FIXED PRICES BY

WARREN BAKER  
BOX 844, STATION B  
MONTREAL, QUEBEC  
CANADA H3B 3K5  
514 482-3070

THE MICHAEL OPPENHEIM COLLECTION OF BLACKSMITH AND RELATED COPPERS

The items offered, but for numbers 40a and 68, constitute the entire Blacksmith collection of Michael Oppenheim. Several of the pieces are the finest examples seen. Identifications are as per the standard work by Howland Wood entitled *Canadian Blacksmith Coppers*. My thanks to Jeffrey Hoare for having photographed the coins.

*All items are subject to prior sale and sold with return privilege. All items are guaranteed genuine. Payment is due on receipt in Canadian funds and is subject to 7% G.S.T. for Canadian citizens and 8% T.V.Q. for residents of Quebec. U.S. customers may pay in U.S. currency at the rate of 75%.*

1. **Wood 1.** Copper. 7.22 grams. N.S. die alignment, as usual. Very fine-extremely fine. A nice clean coin and about as good as it comes. PHOTO \$65
2. **Wood 1.** 6.89 grams. Fine or better, a dark stain on cuirass. \$30
3. **Wood 2.** Copper. 5.37 grams. N.S. die alignment. Unrusted rev. Very fine. Scarcer by far than its N.N. counterpart. PHOTO \$75
4. **Wood 2.** Thin flan. 3.84 grams. N.N. die alignment. First occurrence of rev. rust beneath exergual line. Very fine. PHOTO \$50
5. **Wood 2.** 5.36 grams. N.N. die alignment. Rust free rev. There is a crack in the flan on rev. from edge through torso. Fine-very fine. Ex Courteau/Mabbott/Baker. \$40
6. **Wood 2.** 4.35 grams. N.N. die alignment. Rusted obv. and rev. In this state the reverse appears very crude and distorted. Full extremely fine and from my sale at Bowers and Merena. PHOTO \$200
7. **Wood 2.** Obv. uniface example. 4.48 grams. Fully very fine or better and undergraded in the Everingham Sale (TOREX Fall 1989, lot 2441) with small obv. chip. *Very rare in this condition which may be the finest known.* PHOTO \$300
8. **Wood 2.** Re-cut obv. die as illustrated in Wood's text (p.5). This is the same obv. as seen on Wood 7 and 8 as well as some specimens of Wood 6. 5.22 grams. Very good-fine, dark, old obv. scratches. Actually a rather decent piece. \$125
9. **Wood 3.** Brass. 5.71 grams. N.N. die alignment. Rusted obv. and rev. Fully extremely fine-the best I've seen. PHOTO \$600

10. **Wood 4.** Copper. 6.13 grams. N.S. die alignment. Rev. imperfections due to the poor blank used. One of the finest seen, almost as struck. PHOTO \$250
11. **Wood 5.** Copper. 4.20 grams. N.S. die alignment. Very fine. Ex Mabbott/Baker. PHOTO \$85
12. **Wood 5.** 4.38 grams. A later die state. Fine-very fine. PHOTO \$60
13. **Wood 6.** Copper. 6.01 grams. N.E. die alignment. An early die state showing full harp. Very fine. Scarce this nice, and one of the best I've seen. PHOTO \$200
14. **Wood 6.** 6.00 grams. N.S. die alignment. Re-cut obv. die (same as no. 8). Weakly struck up rev. showing only left side. A break occurs from female bust to border. Fine-very fine or possibly better for the piece. PHOTO \$125
15. **Wood 6.** 3.22 grams. Uniface example of the reverse with "ghosting" of the image appearing on blank side. This variety is often referred to as a brockage, but I'm not sure that this is the case. Ex Everingham Sale (Torex Fall 1989, lot 2437). Fine. PHOTO \$450
16. **Wood 7.** Copper. 5.04 grams. N.S. die alignment. From a very rusted obv. die. Obv. side shows same imperfection as described in number 10. The so-called Britannia-on-water variety. Fine-very fine. Ex Barton/John A. Wood/Baker Sale specimen. PHOTO \$450
17. **Wood 8.** Brass. 4.40 grams. N.S. die alignment. Would be very fine but for a dent on rev. which appears as a small bump on obv. The piece therefore is not entirely straight. One of less than a dozen known to me. PHOTO 17 (mistakenly identified as Wood 7.) \$1200
18. **Wood 9b.** Lees 4 of the Ships, Colonies & Commerce series (Br. 997). One of the Blacksmiths connected to the series due to its reverse which is the same as Wood 9a and Wood 10. Copper. 3.25 grams. N.S. die alignment. Obv. about very fine, but rev. suffers numerous small dings and granularity — still, COMMERCE is full and bold. PHOTO \$450
19. **Wood 9c.** Lees 3. Connected to the series by its obverse which it shares with Wood 9b. Copper. Thin flan. 3.25 grams. N.S. die alignment. Good very fine, not quite straight, clipped flan. \$100
20. **Wood 9c.** Lees 3. Thick flan. 7.59 grams. N.N. die alignment. Nice clean very fine. PHOTO \$125

21. Wood 9c. Lees 3. Thin flan. 4.67 grams. N.N. die alignment. Very fine, small rev. edge ding. I consider this medium straight rev. variety to be scarcer than Wood 4.  
PHOTO \$400
22. Wood 10. Br. 998. Copper. 3.29 grams. N.N. die alignment. Very fine. From the Barton & John A. Woods collection.  
PHOTO \$400
23. Wood 11. Copper. 4.95 grams. N.S. die alignment. A circular-struck indent through neck gives the coin a curious appearance. This phenomenon has also been seen, from time to time, on specimens of the brass series (W.13-18). Interesting. Very fine.  
PHOTO \$50
24. Wood 11. 5.20 grams. Nice clean extremely fine.  
PHOTO \$100
25. Wood 11. 5.39 grams. Struck about 5% off-centre. Fine-very fine. \$35
26. Wood 12. Copper. 5.5 grams. N.S. die alignment. Extremely fine. PHOTO \$125  
*The last two types, Wood 11 & 12, are clearly copies of the earlier pieces (Wood 1-5). The planchet quality and workmanship of this later issue is much superior to their prototypes.*
27. Wood 13. Brass. 6.35 grams. N.S. die alignment. Extremely fine. Ex Fargeon.  
PHOTO \$200
28. Wood 13. 6.19 grams. Very fine-extremely fine, and just barely not the equal of the preceding.  
PHOTO \$170
29. Wood 13. 6.32 grams. Struck about 20% off-centre. Extremely fine, though not as well struck up as the two preceding. A very unusual piece, particularly in this high grade.  
PHOTO \$300
30. Wood 14. Brass. 6.19 grams. N.S. die alignment. Very fine-extremely fine.  
PHOTO \$60
31. Wood 14. 6.00 grams. Straight 14mm clip diagonally across top obverse. *f-vf*. \$35
32. Wood 16. Copper? 6.27 grams. N.S. die alignment. Very fine. The piece is dark, and I prefer to describe it simply as "coppery." \$100  
*I have seen several pieces of the series (13-18) purporting to be copper, but am not convinced that oxidation is not one of the causes for their copper appearance. Dr. Mabbott had the Howland Wood specimen of his number 15 which I later acquired with the collection and he concluded (and I agree) that it was simply a dark brass specimen. This has tended to shed doubt on claimants for the metal variant of this series till metallurgical tests resolve the question forever.*



1  
Wood-1



3  
Wood-2



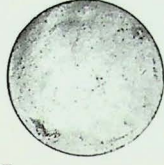
4  
Wood-2



6  
Wood-2



7  
Wood-2



9  
Wood-3



10  
Wood-4



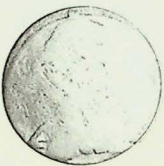
11  
Wood-5



12  
Wood-5



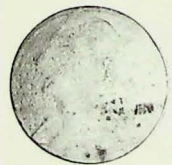
13  
Wood-6



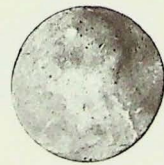
14  
Wood-6



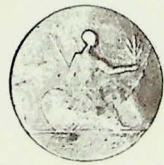
15  
Wood-6



16  
Wood-7



17  
Wood-7



19  
Wood-9b, Lees-4



20  
Lees-3



21  
Lees-3



22  
Wood-10, Br-998





23  
Wood-11



24  
Wood-11



26  
Wood-12



27  
Wood-13



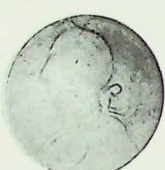
28  
Wood-13



29  
Wood-13



30  
Wood-14



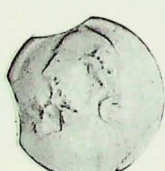
33  
Wood-16



34  
Wood-16



35  
Wood-18



38  
Wood-18



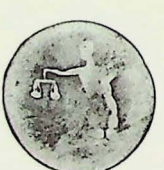
39  
Wood-19



40  
Wood-20



40a  
Wood-21



41  
Wood-23



42  
Wood-23



43  
Wood-23



44  
Wood-23





47  
Wood-23



49  
Wood-23



51  
Wood-23



52  
Wood-23/26



53  
Wood-24



54  
Wood-25



55  
Wood-26



56  
Wood-28



57  
Wood-29



58  
Wood-29



59  
Wood-29



60  
Wood-29



61  
Wood-29a



62  
Low-284



63  
Low-271



64  
Wood-32



65  
Wood-33



66  
Wood-32



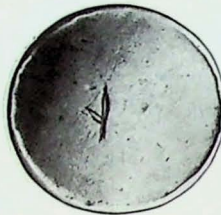
67  
Wood-42



68  
Br-916 Brass



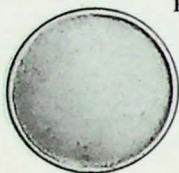
69  
Co-36 NS



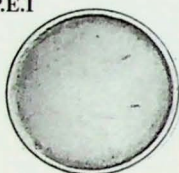
70  
P.E.I.



71  
Br-1012



72  
McNish



73  
Bridge



73a  
Br-521



73b  
Br-719



73c  
Br-971



73c  
Br-719



73p  
Br-971



73p  
Br-953



33. **Wood 16.** Brass. 6.29 grams. Very fine-extremely fine. This variety very scarce in high grade. Ex Courteau/Mabbott. PHOTO \$125
34. **Wood 17.** Brass. 6.05 grams. N.S. die alignment. The scarce mule. Very fine. PHOTO No. 34 which has been mistakenly identified as Wood 16. \$350
35. **Wood 18.** Brass. 6.05 grams. N.S. die alignment. Probably extremely fine, but cuirass is poorly struck up. PHOTO \$75
36. **Wood 18.** 5.94 grams. Very fine, and showing a little detail of the cuirass. \$50
37. **Wood 18.** 5.89 grams. Struck 5% off-centre. Very fine. \$60
38. **Wood 18.** 5.79 grams. Countermarked T K on rev. There are also two circular clips of 12mm each at top and left obv. Coin and countermark are very fine. Nice unusual piece. PHOTO \$275
39. **Wood 19.** Br. 1008. So-called "Indian Head" Blacksmith. Copper. 3.31 grams. 26mm. Small, thin flan. N.S. die alignment. A nice full strike, very fine. Ex Fargeon. PHOTO \$750
40. **Wood 20.** Br. 1008. Brass. 5.03 grams. 28mm. Large, medium flan. N.N. die alignment. Very fine or better, with the date not struck up. Ex Everingham Sale, (Torex, 1989, lot 2453). PHOTO \$1200
- 40a. **Wood 21.** Copper. 3.97 grams. N.S. die alignment which differs from the only other known specimen sold in New York in 1987 by Bowers and Merena which was a N.E. die alignment. *Evidently this is the long-lost W.W.C. Wilson specimen sold in 1927. The piece was found in Montreal and consigned to the Montreal Stamp & Coin Auction sale of October 1995. The coin is a nice fine though not quite as good as the previously mentioned specimen. This piece is lacking in all public collections. Not from the Oppenheim Collection.* PHOTO \$5500
41. **Wood 23.** Copper. Die State 1c. 6.39 grams. N.N. die alignment. Planchet cutter mark (retained clip). Very fine-extremely fine. PHOTO \$50
42. **Wood 23.** Die State 1b. 6.66 grams. N.N. die alignment. Very fine. PHOTO \$85
43. **Wood 23.** Die State 1c. 6.31 grams. N.N. die alignment. Very fine. PHOTO \$30
44. **Wood 23.** Die State 2a. though I don't detect the second rust spot, above ribbon. 6.84 grams. N.N. die alignment. Fine. PHOTO \$50  
*Varieties with both rust spots should properly be termed 2b. The above is much scarcer.*

45. **Wood 23.** Die State 3a. though the reverse state is slightly earlier, not yet showing the break above shield. 6.34 grams. Fine. PHOTO \$50  
*The reverse break variety should be called 3b.*
46. **Wood 23.** Die State 4. 4.30 grams. N.S. die alignment. *vf-ef.* \$60
47. **Wood 23.** Die State 4 with rev. cupping, one of only three such seen. 3.98 gm. PHOTO \$100
48. **Wood 23.** Die State 5. 5.36 grams. N.N. die alignment. Fine-very fine. \$45
49. **Wood 23.** Die State 5. 4.55 grams. Circular clipped flan (15mm) across head. Extremely fine. PHOTO \$100
50. **Wood 23.** Die State 6. 6.54 grams. Circular clipped flan (8mm.) across head. Fine. \$50
51. **Wood 23.** Die State 8. 3.46 grams. So-called "Gibson Girl" variety. Very fine. Ex Courteau/ Mabbott. PHOTO \$350
52. **Wood 23-26.** Obv. uniface example. Copper. 3.39 grams. Good-very good. Small circular clip to left centre obv. Evidence of obverse ghosting on blank rev. Rare. I've not seen a half dozen pieces. PHOTO \$500
53. **Wood 24.** Rising Sun Tavern. Copper. 4.59 grams. N.N. die alignment. Very fine. Eight of the letters show. One of two pieces from the Courteau/Mabbott collection. The other was sold at the Bowers and Merena Sale (lot 1060). PHOTO \$500
54. **Wood 25.** Bust/Starbuck. Copper. 3.20 grams. N.S. die alignment. Very fine, though only graded as fine-very fine in the Bowers & Merena Sale where Michael purchased it. PHOTO \$750
55. **Wood 26.** Bust/Eagle. Copper. 3.15 grams. N.E. die alignment. Extremely fine; it is difficult to imagine a specimen better than this one. Ex Courteau/Mabbott/Baker/Everingham Sale (Fall 1989, lot 2466). PHOTO \$1500
56. **Wood 28.** Eagle/Peck. Copper. 4.35 grams. N.E. die alignment. Very fine-extremely fine. PHOTO \$850
57. **Wood 29.** Peck/Starbuck mule. Copper. 2.93 grams. The very scarce thin flan variety. N.W. die alignment. Very fine, but holed. PHOTO \$300

58. **Wood 29.** 6.27 grams. Thick flan variety. N.S. die alignment. Circular 9mm. clip to top left (Peck side). Very fine but, as usual, not perfectly struck up. PHOTO \$150
59. **Wood 29.** 6.78 grams. Thick flan variety. N.S. die alignment. The only fully struck up piece that I recall seeing. Shows more than the Bowers and Merena "as struck" specimen (lot 1069). Extremely fine, the reverse edge (Starbuck side) has some damage, perhaps not manmade. PHOTO \$400
60. **Wood 29.** 8.74 grams. Large, thick Hard Times planchet. N.N. die alignment. The first issue, prior to the Blacksmith productions (nos. 57-59). Fine-very fine. Scarce. PHOTO \$400
61. **Wood 29a.** Copper. 5.70 grams. N.S. die alignment. PHOTO \$1200  
*This is Hard Times token Low 284, but in a "Blacksmith state." As can be seen by this specimen and the one sold at Bowers and Merena, the obverse die had broken more severely than the normal issue and was no doubt discarded by the firm. These thin flan issues, struck without collar, should be considered the first issue of the series (25-29). Due to the very worn and broken state of the obverse it must soon have been given up. The reverse die held up and was combined with the Peck obverse to create variety Wood 29. Rare, and first discovered by Blacksmith collectors E.W. Barton and/or John A. Woods, but not published until the Bowers and Merena offering in 1987 (lot 1072).*
62. **Low 284.** Copper. 9.46 grams. N.N. die alignment. Same as the preceding but the Hard Times issue which is a considerably heavier coin. Extremely fine. PHOTO \$60
63. **Low 271.** Copper. 9.79 grams. N.N. die alignment. Original of which the obverse later served to create the Blacksmiths (W. 28,28a,29). About uncirculated. PHOTO \$85
64. **Wood 32.** Copper. 5.64 grams. N.N. die alignment. Fine-very fine, a very attractive specimen. Ex Courteau/Mabbott collection. PHOTO \$1000
65. **Wood 33.** Copper. Three states of the die. (1) No rust. 5.73 grams. (2) Rust under bust. 6.11 grams. (3) Rust throughout obv. 5.97 grams. N.S. die alignment. All very fine. PHOTO (1 only) \$100
66. **Wood 34.** Copper. 5.39 grams. N.N. die alignment. Fine, dark spot on head, and some old obv. scratches. The Barton specimen which is referred to in Wood's monograph (p. 8). PHOTO which has been misnumbered Wood 32. \$750
67. **Wood 42.** Copper. 4.80 grams. N.S. die alignment. Not a Blacksmith! The reference piece from the McLachlan collection was a very worn George II counterfeit halfpence which due to its worn condition showed no reverse. This is one of three or four that I've owned. Very good. PHOTO \$200

68. Br. 916. Previously unknown "Sheaf of Wheat" in brass. 5.29 grams. N.S. die alignment. Extremely fine, a remarkable striking with really little or no wear and with a virtually full rim. The coin is struck on a smooth flan, unlike the typical copper specimens which are struck on a poor quality of copper which frequently cracked or showed other imperfections. PHOTO [Price on Request]

The "Sheafs" were struck by James Milner of Charlottetown, P.E.I., the dies having been ordered from a firm in the United States at a cost of \$700. Another writer claimed the cost to have been 750 pounds, but this sum seems excessive. Only a small quantity was struck, probably due to the dies cracking early on and the poor quality of copper that Milner was using. "A few coins were struck, when the whole concern was pitched into the corner afterwards sold as old iron." The Milner establishment was on Pownall Street, opposite jail. It is my opinion that this brass striking could be a test piece made by the American manufacturers prior to shipping the dies to Milner.

69. C. 361 (N.S.) J.B. script/Warehouse. Claimed for John Brown of Halifax. Copper. 3.96 grams. N.W. die alignment. Very fine-extremely fine, old, thin scratch on obverse and couple of similar marks on obv. only discernible with a glass. Nice piece, and value above average. \$1200

70. P.E.I. incused on penny-size blank. Copper. Rev. Blank. 11.94 grams. Very fine or so if such can be graded. PHOTO \$1500  
According to J. Metcalf the coin was made for Peter McCausland who "resided on and owned Rustico Island, and farmed, fished and sold goods to the French people of that locality for a long period." [The Canadian Antiquarian and Numismatic Journal, Second Series, Vol. 1, No. 3, Jan., 1890, p. 99].

71. Br. 1012. C. 25. "Blacksmith" Bust & Harp. Brass. 4.89 grams. N.E. die alignment. Fine-very fine; date not struck up (as is often the case). PHOTO \$175

72. McNish Copper. 6.40 grams. So-called by John A. Woods who refers to them in an article of *Mehl's Numismatic Monthly* for January, 1917. According to Woods, a Port Hope blacksmith by the name of McNish issued them. It has generally been accepted that the McNish coppers were made with rims and were simply blanks. They are rather scarce. PHOTO \$10

73. Collection of brass and copper brass contemporary counterfeits. Very crude. \$900

Br. 521. Copper	Br. 875. Brass. Two pieces
Br. 542. Copper	Br. 953. Copper
Br. 719. 1852. Brass	Br. 962. Brass
Br. 719. 1857. Brass	Br. 962. Copper. Two pieces
Br. 719. Too poor to identify date. Brass	Br. 971. Copper
Br. 870. Brass. Two pieces, possibly varieties	Br. 971. Brass
Br. 870. Copper. Three pieces. Varieties?	Connecticut cent 1787. Copper
Br. 875. Copper. Two pieces, one very thin	U.S. Cent, 1853. Brass

Twenty-two pieces in all, which includes seven duplicates. A few of these are rare. The best grouping I've seen. [end of catalogue]