

A Numismatic Treat on Canadian Coins

**Canadian Provincial
1858-1859**

COPPER CENTS



An Illustrated Catalogue with detailed description of date var. on 1858 and 1859 large cents, including over dates, altered dates, listing; also illustrating 62 date var. of large cents which during the past were not known among collectors of Canada cents.

Published by

PARK COIN SHOP

BERT KOPER, *Proprietor*

NUMISMATIC EXPERT

CANADIAN COINS OUR SPECIALTY

(Formerly Editor of Canada Money Talks)

A.N.A. 6002

C.N.A.S. 5

377 HENDERSON HIGHWAY

WINNIPEG, CANADA

PREFACE

THE following table, as set out below, with a minute detailed description of all breaks in vine of maple wreath, per coins illustrated.

To follow this table per Groups 1, 2, 3, etc., place your coins in front of you, mark on a sheet of paper the groups listed, then check the breakage in vine of maple wreath and mark each, and so on.

Such checking will not take very long. By counting the breaks in vine of wreath, place them then on a chart with Group 1 or 2, etc. until finished; then check your plate work for the var. on dates, such as closed 5 or open 5, slanting 5 or upright 5 in date, etc., similar to other figures in 1 or 8 or 9, or small 5 or 8, etc., and you will have the coins all in rotation per our illustration on plate work.

There are those illustrations of each coin which are set out in rotation as well, and through this you will be able to follow its die var. and work of engraving of the enclosed plate work.

GUIDE AND TABLE

How to arrange and check your coins with all illustrations of this platework.

1858 COINS

Group 1

(One break in vine of maple wreath.)
Plates 1A, 2, 2A, 3—Vine in maple wreath is broken level with tip of "c" of cent to left.

Group 2

(Two breaks in vine of maple wreath.)
Plate 4—Vine is broken in maple wreath level with tip of "c" of cent and to right in wreath alongside figure 8 in date.

Group 3

(One or two breaks in vine of wreath.)
Plates 5, 5A, 5B, 6, 7—Vine of maple wreath is broken level with centre of "c," and some higher others lower than "c" of cent.

1859 COINS

Group 1

(Whole and perfect dies.)
Plates 1, 2, 3, 13A—All whole dies. No breakage in vine of maple wreath.

Group 2

Plate 2A, 13B, 13C—No breakage in vine of wreath, but vine is courser cut.

Group 2A

(Some show with a retouch die.)
Plate 2A—Some of those are found, where the die has been retouched, owing to some of the maple leaves being high in relief.

Group 2B

Plates 5A, 6, 17, 18, 19, 29—Breakage in vine of maple wreath slightly higher than "c" of cent to left.

Group 3

(Two breaks in vine.)
Plates 5B, 7A, 8, 8A, 10, 10A, 11A, 13, 13A, 13B, 13C, 14, 15, 16, 20, 21, 28, 31, 34, 35, 36, 38—All these have two

breaks in vine of maple wreath, one break slightly higher than "c" of cent to left, the other to right of figure 9 in vine of maple wreath.

Group 4

(Three breaks in vine.)
Plates 5, 7, 9, 22, 23, 24, 26, 33, 37—All these have three breaks in vine of maple wreath, one above to the tip of "c" of cent to left, some have the second break right in upper part of wreath, in centre of wreath, others have the second break slightly to the right angle of wreath, and the third break of those is mostly found about level either with or about right of figure 9 in date to right.

Group 5

(Four breaks in vine.)
Plates 11, 25—These have four breaks in vine of maple wreath. Break one level with "c" of cent, to left, second break slightly higher, and is near toothed border. Third break to right near toothed border above "e" of one. Fourth break is to right in wreath, slightly lower than figure 9 of date to right—some are slightly higher, others lower.

Group 5

(Five breaks in vine, or more than five breaks.)
Plate 4 has seven breaks in vine of wreath, none are joined. These breaks are very wide, and are: One level with "c" of cent; two breaks slightly above in vine near toothed border; two breaks below the one break (level with "c") also joined to toothed border, all to left side of coin; one break at lower tip of figure 9 of vine touching inner toothed border, and one slightly above, touching outer toothed border.

PROVINCIAL COINAGE OF CANADA

1858 CENTS

★



Plate 1

Trial issue. Proof, struck of silver, also silver and copper mixed. Unique, few known. There are some struck of copper, a few of brass and some of lead; some in lead show only the obverse. R. 10.

Obverse like the proofs, but the reverse has the bust incused, and bust is facing right. As shown in above illustration, also unique. R. 10.



Plate 1A

Plate 2

Struck in brass, but all with perfect dates, some of this Var. are found of a very thick flan (planchet). R. 10.

Struck of regular metal, with perfect date, date is single cut. Most of these have a small initial "c" between maple wreath and border. Semi-unique. R. 10.

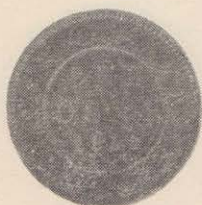


Plate 2A

Plate 3

Perfect date, but date is single cut (without "c" between wreath and border). R. 9.

First 8 and second 8 in date are smaller than other figures in date. Lower part of figure 5 is larger than previous illustrations (like 1, 1A, 2, 2A) R. 8.



Plate 4

Plate 5

Letter "o" of one has been weakly cut, figure 1 and first 8 in date are same size, the figure 5 is slanting, second 8 in date has been recut. R. 8.

Letter "o" of one has a small "o" cut inside of "o" in one. The figure 5 in date is slightly slanting, this shall be called the semi-slanting 5. This figure 5 has a large space between knob and upper part of 5. R. 10.



Plate 5A

Perfect letters and date. Figure 5 in date is upright. Called the upright 5 in date. R. 7.



Plate 5B

As last, but struck in brass. Unique. R. 10.



Plate 6

Upright figure 5 in date, but knob on figure 5, as on lower part of 5, touches nearly upper bar, hence the calling closed date, or closed 5 in date. R. 8.



Plate 7

Figure 5 and last 8 in date slanting, lower part of figure 5 is double cut. R. 8.

PROVINCIAL COINAGE OF CANADA



1859
CENTS

★



Plate 1

Whole and perfect dies. Upright 9 in date. R. 10.

Trial issue, or called proofs. Struck in silver. Struck in composition of silver and brass. Struck in copper. Struck in lead. Greatest rarity. Very unique.



Plate 2

Obverse of this plate Var. is with or without die lump on truncated bust of Victoria. This die lump gives the appearance of a large rose. Perfect date and letters. R. 10.



Plate 2A

Perfect date, whole dies. Without die lump on obverse. Letters and figures in date are even spaced. R. 9.



Plate 3

Obverse with a die lump between last "a" of Gratia and "r" of Regina. Perfect date. R. 8.



Plate 4

Slanting 9 in date. R. 7.



Plate 5

From re-cut dies, or worn 1858 dies. Very small figure 9 in date, but the figure 9 is very wide in centre. Date is widely spaced. R. 6.



Plate 5A

This Var. is about similar to Plate 5, but date is bolder. R. 7.



Plate 5B

1859 cut over 1858, as can be seen in figure 9 of date. R. 10.



Plate 6

1859 over 1858. Struck from recut 1858 dies which have been recut. Figure 9 of date is also lower than all other figures. R. 10.



Plate 7

1859 struck over 1858. Struck from badly worn 1858 dies, as re-cut into 1859. Figure 9 is also wide. R. 9.



Plate 7A

1859 over 1858. Recut from worn 1858 dies. R. 9.



Plate 8

1859 over 1858. A real altered date. Figure 9 of date is tall and narrow. Upper part of figure 9 is small and narrow and shows distinct traces of altered die. R. 8.



Plate 8A

1859 over 1858, but has a larger break in vine of wreath. R. 9.



Plate 9

1859 over 1858. Figure 9 in date all level with all other figures in date. R. 8.



Plate 9A

1859 over 1858. The word "cent" is spelled CL (with small period in upper part) N T. Figures 1 and 8 are perfect, 5 is recut and heavy. Figure 9 is small and stubbie and can clearly be seen that it is a recut die from 1858 into 1859. Unique. R. 8.



Plate 10

1859 over 1858. Struck also from worn recut dies. Upper part of 9 in date, while lower part is double cut and curved inwards. R. 7.



Plate 10A

1859 over 1858. Struck from recut dies. Traces of recut can be seen, has many a die break on obverse and reverse. Struck in both metals, brass and copper. R. 8.



Plate 11

1859. Perfect date. Found in brass and copper. Copper, R. 7. Brass, R. 8.



Plate 11A

Perfect dates, but from recut 1859 dies. Found only in copper metal. Unique.



Plate 12

Perfect 1859 date. R. 2.



Plate 13

Figure 8 in date very weakly cut. Figure 9 in date has at end of tail a stubbie curve and is lower than all other figures. R. 3.



Plate 13A

Figures 8 and 5 in date are single cut. Struck from worn and cracked dies. R. 5.



Plate 13B

Figures 8, 5, 9 are single cut. The toothed inner border is of a slightly coarser design. Struck from worn and recut dies. R. 6.



Plate 13C

Figure 8 is double cut, 5 and 9 are single cut. R. 6.



Plate 14

Figure 5 in date single cut. Struck very weakly. R. 5.



Plate 15

Note the spelling of OENT. Struck from cracked dies. Unique. R. 12.



Plate 16

Perfect dies. Figures in date even spaced. R. 6.



Plate 17

Figure 9 in date lower than all other figures in date. R. 4.



Plate 18

Figure 9 in date very weakly cut and also shown on reverse traces of obverse incused. R. 6.



Plate 19

Perfect date. Has several loose maple leaves inserted in wreath at lower part. Also traces of obverse incused on the reverse. Struck in both metals, copper and brass. Copper, R. 6. Brass, R. 8.



Plate 20

Recut dies with perfect date, but all figures double cut. Also found with blunt 1 in date as per above illustration on plate. Unique. R. 12.



Plate 21

Slanting 5 and 9 in date. R. 5.



Plate 22

Perfect date. Most are found with cracked dies on obverse. R. 4 to 5.



Plate 23

Perfect date. Also found with very thick knob on tail of figure 5, or with upright and slanting 5 in date. R. 5.



Plate 24

Figures 1 and 5 are lower than figure 9 in date. Struck from cracked dies. Two pellets are missing on inner dotted circle and level with figure 1 in date. This is an extremely rare specimen. R. 10.



Plate 25

Struck from old and rusty dies. Lower part of figures 8 and 9 are slanting. R. 5.



Plate 26

Slanting 9 in date. Several leaves in maple wreath to right of figure 9 are not joined. Also traces of incuse, with obverse profile. R. 5 to 7.



Plate 27

Upright but small 9 in date, also found with light knob on lower part of 9 in date. R. 3 to 4.



Plate 28

"O" in one is large. Figures 1 and 9 in date are larger than other figures (9 is close to figure 5). Most of these are found to be struck from broken dies. R. 4.



Plate 29

Date and figures all level, but lower part of 5 is blunt and has no knob. Some are found with thick knob on lower part of 5. All leaves in wreath at lower part of date are not joined to vine. R. 7.



Plate 30

Perfect date. Maple leaves of this issue are all smaller than of any other earlier illustrations. Unique. R. 15.



Plate 31

Obverse of this issue, the truncated bust, is larger and wider, hence the calling of the wide truncated bust issue. Reverse, small 8 in date, closed 5 in date, but 8 and 5 also are slanting. Unique. Also traces of obverse bust incused on reverse. R. 12.



Plate 32

Truncated bust on obverse as per Plate 31. Figure 1 narrow. Figures 8 and 5 are smaller, figure 9 larger, but lower part of 9 is longer than all other figures. Note figure 5 is open. R. 12.



Plate 33

Truncated bust as per Plates 31 and 32. Small 8 and 5 in date. Lower part of 5 double cut, but the upper stroke of 5 is missing. Thick knob on tail of 9. R. 11.



Plate 34

Truncated bust, as per Plates 31, 32, 33. Figure 1 in date large. Figures 8 and 5 are small. Tall but slanting 9 in date. R. 11.



Plate 35

Truncated bust, as per Plates 1 to 29 of the obverse. Those are called the small truncated bust. Tall 1 in date. Small 8-5-9 in date, but the upper part of 9 is single cut, lower part of 9 has no knob. R. 9.



Plate 36

Truncated bust is lightly cut. Figure 8 small but wide. Figure 5 small but open. Figure 9 slanting. R. 8.



Plate 37

Slanting 5 in date. Maple leaves below figure 5 are not joined to vine in wreath. R. 7.

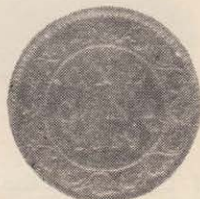


Plate 38

Letter "o" of one is slanting. Lower stroke of figure 9 is single cut and has no knob. R. 6.

Announcement



OTHER publications on Canadian coins, such as 5c, 10c, 25c, including the early provincial coins, are also in the making.

This work will open a complete new field of numismatics of Canadian coinage of unknown variety, on over dates, altered dates, crossed dates, with the most unique 1868 Canada dime, also will cover a great deal of pattern pieces on large cents and all other silver pieces.

The publisher of this work has devoted much time on same during the last twelve years and made a very close study on coins of Canada, also being recognized as a well-known Numismatist expert on coins of Canada, plus the stock we do carry regularly of same at all times. This has given us the opportunity to make such future work worth while when ready for the collector on coins.

Another Numismatist treat which is in the making are the coin boards and holders for Canadian coins of large cents, five, ten, twenty-five and fifty cents, and silver dollars, including type set coin boards for 1858 and 1859 Canada large cents, as per plate work herein illustrated, also type set boards of silver coins of all descriptions, such as 5 cent silver, 10 cent silver, 20 cent silver, all in four varieties each, of open date, close dates slanting dates, etc., with many more varieties which will appear in a notice to all collectors before the end of April.



WATCH FOR THIS ANNOUNCEMENT

This will be a real Numismatist treat when ready.