

ENTERED AT THE FEDERALSBURG, MD. POST OFFICE AS SECOND CLASS MATTER

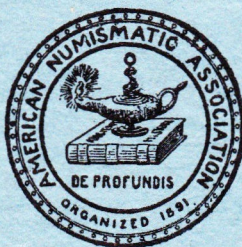
VOL. XLIII

No. 2

THE NUMISMATIST

An Illustrated Monthly for Those Interested
in Coins, Medals and Paper Money.

FEBRUARY 1930



Published Monthly by
The American Numismatic Association

Publication Office, Federalburg, Md.

FRANK G. DUFFIELD, EDITOR.

YEARLY SUBSCRIPTION \$2.00. SINGLE COPY 25 CENTS

The Coins and Tokens of Newfoundland

By EUGENE G. CORTEAU, M. D., St. Jacques, Quebec.

(The author reserves the right to have it published in book form).

Newfoundland was discovered by John Cabot in 1497, but it was not until 1583 that Great Britain took formal possession of the island.

The tokens issued by this country are few and most are rather common, except the Peter M'Auslane and that dated 1858 with ship, which are very rare.

The degrees of rarity given are from 1 to 10. Varieties rated R. 1 or 2 are relatively common, while those rated R. 7 or 8 are very rare, R. 9 or 10 of the utmost rarity.

I am greatly indebted to the following gentlemen for sending me their tokens for examination: Messrs Edward Carleton, S. S. Heal, Dr. Langstroth, Judge Lees, Thomas Murray, O. Pelletier, L. A. Renaud and W. B. Tennant.

Description.

1. Obv., A fleece hanging, facing to the left. R . & I . S . RUTHERFORD above sheep; ST . JOHN'S | NEWFOUNDLAND, below, in two lines. An ornament before R and one after D.



No. 1.

Rev., Arms. Motto: "PER MARE PER TERRAS" (on sea and on land). No date. Upright and upset reverses. The latter is generally found struck on a thinner flan. Plain edge. Brass. R. 1.

2. Obv., Same as No. 1.

Rev., Similar. Dated 1841. Brass. R. 1.



No. 3.

3. Obv., Similar, but RUTHERFORD BROS . HARBOUR GRACE | NEW-

FOUNDLAND. A rosette before R and one after S. Sheep's right horn higher than H of HARBOUR; human ear-shaped curl at the end of tail.

Rev., Similar to No. 1. Dated 1846. Initial letters R. H. above date, for Ralph Heaton. Copper. R. 1.

The "fine wool" variety.

4. Obv., Same as No. 3, but a weaker impression.

Rev., Closely resembles No. 3, but the design is lightly cut, and dots around border smaller and more distant. Always found with two die-defects: One between dots and left ornamental leaf, the other inside of vizor, to the left. R. 4.

5. Obv., Same as No. 4, but still a weaker impression. Small die crack from last N through D of NEWFOUNDLAND.

Rev., Same as No. 4, but from a retouched die. The dots around border are large, especially opposite horse's heads. The initial letters hardly show. Always found with three die defects: A line in front of left horse, another small one from vizor to right bird, and a trace of recutting close to vizor on right ornamental leaf. R. 5.

6. Obv., Same as No. 3. Trace of a letter on left ribbon, probably D. Two die cracks from border, one through H of RUTHERFORD, the other touching rosette to E of GRACE.

Rev., Same as No. 5. Heal variety. R. 7.

7. Obv., Same as No. 3, but fleece much coarser and hoofs smaller. The two curls at top of fleece to the right of ribbon give roughly the appearance of "25."

Rev., Same as No. 3. R. 3.

The "coarse wool" variety.

8. Obv., Same as No. 3, but the sheep's right horn is directly opposite H, and there is a star instead of a rosette before R and one after S. Found in most instances with a die crack from border to left star.

Rev., Same as No. 3, but with small dot inside of escutcheon center. Up-right and upset reverses. R. 2.

The "stella" variety.

9. Obv., Ship to the right under full sail. On this the ship is different from any of the well known "Ships, Colonies & Commerce" series.



No. 9.

Rev., In the center of the field, 1858, in large figures. Small dots around border on both sides. Plain edge. R. 9.

10. Obv., RESPONSIBLE GOVERNMENT around border, AND FREE TRADE, in three lines, in the field. A dot between R and T.



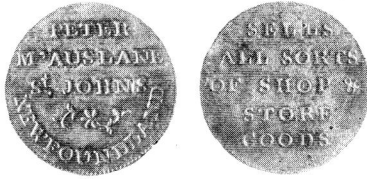
No. 10.

Rev., FISHERY RIGHTS FOR NEWFOUNDLAND around border. 1860 in the field within a circle. A dot between F and D. Dots around border on both sides. Plain edge. R. 6.

"Issued in commemoration of the emendation of the fishery treaty be-

tween Great Britain and the United States. The treaty fixed the shore limits."—Breton.

11. Obv., PETER | M'AUSSLANE | ST. JOHNS in three lines; an ornament below; around bottom border, NEWFOUNDLAND.



No. 11.

(This is from Mr. Ludger Gravel's collection. Actual size, 22 mm.)

Rev., SELLS | ALL SORTS | OF SHOP & | STORE | GOODS in five lines in the field. Dots around border on both sides. Plain edge. R. 10.

Regal Coinage.

I only describe the different varieties of this coinage to the year 1865, inclusive.

12. Obv., Bust of Queen Victoria laureated, facing to the left. VICTORIA D : G : REG : Rose, thistle and shamrocks, and the motto of the Order of the Garter: "HONI SOIT QUI MAL Y PENSE" on left shoulder.



No. 12.

Rev., Crown, an ornament under, and the date 1865. The whole within a circle of dots, surrounded by a wreath composed of mayflowers and leaves, oak leaves and acorns. Above, ONE CENT, below, NEWFOUNDLAND, within a circle. Top of figure 6 recut. This figure is even with and away from 5. Milled border on both sides. Plain edge. R. 1.

13. Obv., Same as No. 12. Die-crack between I and A of VICTORIA.

Rev., Same as No. 12. Figure 6 even with and still farther from 5. R. 4.

14. Obv., Same as No. 12.

Rev., Same as No. 12. Top of figure 6 double cut. This figure is higher than and close to 5. Die crack from crown to the circle of dots, to the left. R. 2.

15. Obv., Same as No. 12.

Rev., Same as No. 12. Top of figure 6 double cut. This figure is higher than and away from 5. R. 1.



No. 16



No. 17.

16. Obv., Bust of Victoria, laureated, facing to the left. VICTORIA D : G : REG : NEWFOUNDLAND.

Rev., 5 CENTS | 1865. within an ornamented border. Milled edge. Silver. R. 1.

17. Obv., Similar to No. 16.

Rev., Similar. 10 CENTS | 1865. Silver. R. 1.

18. Obv., Similar.

Rev., Similar. 20 CENTS | 1865. Silver. R. 1.



No. 18.

This country has also issued some 50-cent silver pieces from 1870 to 1888, inclusive.

19. Obv., Similar.



No. 19.

Rev., 2 DOLLARS | 1865, within a circle. TWO HUNDRED CENTS—
ONE HUNDRED PENCE. around border. Gold. Milled edge. R. 2.

Also issued in the following years: 1870, 1872, 1880, 1881, 1882, 1885, 1888 and 1890. The 1880 emission is the scarcest.