

ENTERED AT THE FEDERALSBURG, MD. POST OFFICE AS SECOND CLASS MATTER

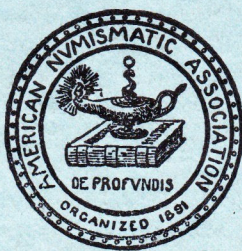
VOL. XLVII

No. 2

THE NUMISMATIST

An Illustrated Monthly for Those Interested
in Coins, Medals and Paper Money.

FEBRUARY 1934



PUBLISHED MONTHLY BY

The American Numismatic Association

ORGANIZED 1891.

Incorporated Under the Laws of the United States, May 9, 1912.

Publication Office, Federalsburg, Md.

YEARLY SUBSCRIPTION \$2.00.

SINGLE COPY 25 CENTS

The Canadian Bust and Commerce Tokens

Or The So-Styled "Tiffin Tokens."

By EUGENE G. COURTEAU, M. D., St. Jacques, Quebec.

It is said that the large half pennies and the pennies of this series were imported from England by a Montreal firm named Tiffin. This would explain their surname, Tiffin tokens, or simply the "Tiffins."

Mr. Tiffin kept for many years a wholesale grocery store on Commissioners street. He was well known for his great courtesy and made an extensive trade with country dealers. The same firm is also supposed to have ordered the eagle half penny dated 1813, struck on thick flan. Not long after their emission there appeared a lot of counterfeits in copper and in brass of light weight. Some are the product of unskillful die sinkers and are in most instances very rudely done.

However, the great rarity of some of them and their numerous distinct varieties render, to my thinking, the collecting of these tokens very interesting. The counterfeit half pennies are found with two different reverses. The former is without legend. The second has HALF PENNY TOKEN around border.

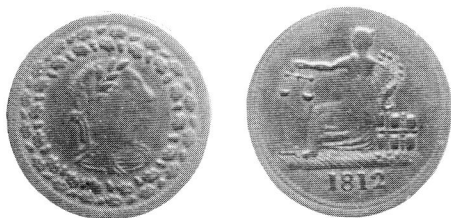
In giving the description of the different varieties included in this series I have adopted an entirely different plan than in my former list, published in *The Numismatist* in 1907.

TIFFINS.

1812. HALF PENNIES.

I shall divide these tokens into two groups according to reverses. In the first case the reverses are without legend. In the second case they are with legend.

Group I—Without legend on reverse. From No. 1 to No. 8, inclusive.



No. 1.

1. Obv. Bust to right, laureated with eight leaves within an endless oak wreath of 32 leaves running to the right. Three acorns above top of head, inside of wreath. Small defect behind ribbon bow. Rev. Female seated on a bale of goods, facing to left, a pair of scales in her right hand and a cornucopia in her left. Cannon balls on ground. The whole representing Commerce. In exergue, 1812. The ship's right mast is much shorter than the left. The cannon balls are grouped in four pairs and are below bale of goods. They have all beaded border on both sides and plain edges. Brass. R. 2. Cannon balls below bale of goods.

2. Obv., Same as No. 1. Rev. Female has short thighs and long legs; her left hand is above middle section of bale of goods. Small cannon balls on ground grouped in three pairs below female's dress. Brass. R. 2. Cannon balls below dress.

3. Obv. Silly head laureated with nine leaves within an oak wreath of 36 leaves running to the right. No acorns inside of wreath above top of head, but a small dot between the leaves. Rev. Same as No. 2. Brass. R. 3. Balls below dress.

4. Obv., Bust laureated with nine leaves within a wreath of 41 leaves running to the right. Two acorns inside of wreath above head. Speck

between hair and top leaf (leaf exceeding head). Rev. Same as No. 2. Brass. R. 3. Balls below dress.

5. Obv. Large bust within a wreath of 45 leaves running to the left; its point is very close to one of the leaves. Laurel wreath has three top leaves, the left is below acorn. Rev. Same as No. 2. Brass. R. 5. Balls below dress.

6. Obv., Bust within a wreath of 47 leaves running to the left. There are four acorns grouped in two pairs below man's chest. Rev. Same as No. 2. Brass. R. 10. Balls below dress.

7. Obv. Silly head. Wreath of 36 leaves running to the right. Dot between leaves above head. (Same as No. 3.) Rev. Female with longer thighs than legs; fruits in cornucopia are away from head; four cannon balls on ground, three of which are between female's dress and bale of goods. The ship's right mast is a trifle higher than the left. Brass. R. 6. Balls between dress and bale of goods.

8. Obv. Wreath of 47 leaves running to the left. Four acorns grouped in two pairs below man's chest. (Same as No. 6.) Rev. Same as No. 7. Brass. R. 4. Balls between dress and bale of goods.

Group II—With legend on reverses. From No. 9 to No. 27 inclusive.



No. 9.

9. Obv. Silly head. Wreath of 36 leaves running to the right. Dot between leaves above head. (Same as No. 3.) Rev. Commerce seated to left. HALF PENNY TOKEN. 1812. Female with long thighs and short legs; her left hand lays on right cord. Nine cannon balls on ground. Die break from bale of goods toward N of TOKEN. Brass. R. 9.

10. Obv. Large bust with its point very close to one of the leaves, which run to the left. Laurel wreath has three top leaves. (Same as No. 5.) Rev. Same as No. 9. Broken die. Brass. R. 9.

11. Obv. Bust within a wreath of large, open leaves running to the left; most have no stems and several are recut. There are four acorns grouped in two pairs below man's chest. Plain button fastening drapery. (Same as No. 6.) Rev. Same as No. 9. Perfect and broken dies. Brass. R. 1.

12. Obv. Same as No. 11. Rev. Female with short thighs and long legs; her left-hand fingers lay on left cord; chignon touches letter Y to the left. Eight cannon balls proper on ground. Die crack through letter L, female's left foot and second 1 in the date. Brass. R. 5.

13. Obv. Same as No. 11. Rev. The hair is so arranged around the head that the female appears to wear a small cap, the top of which is very close to letter Y to the right. Without daisies in cornucopia. Small letters, close date. Brass. R. 10.

14. Obv. Large bust with its point very close to one of the leaves. Laurel wreath has three top leaves. (Same as No. 5.) Rev. Same as No. 13. Brass. R. 1.

15. Obv. Same as No. 14. Rev. The chignon is large, on top of head and below letter Y. Three daisies in cornucopia. The female's back is almost on line with the bale's right cord. Bad crack in the die from border through first figure 1 and ground to letter H. Brass. R. 10.

16. Obv. Laurel wreath has two top leaves and locks of hair to the right; double ribbon-bow, small line from left ribbon end. The acorn stem below man's chest joins that of middle leaf. Rev. The chignon is from the back of the head, is double cut and below letter Y. Letters and figures of the date are of medium size and well proportioned. Brass. R. 1.

17. Obv. Bust with very ugly face. The oak leaves run to the right. Defects behind the head and at ribbon-bow. Rev. Same as No. 16. Brass. R. 1.

18. Obv. Within locks of hair to the right of laurel wreath, which has two top leaves. The oak leaves run to the left. The acorn below man's chest emerges from outer leaf. Rev. The chignon on female's head is below the right of letter Y, which is recut to the right. The letters are small, the date is large and compact with figures recut at top. Brass. R. 2.

19. Obv. Apparent locks of hair to the right of laurel wreath, which has only one top leaf. The acorn below man's chest emerges from inner leaf. Rev. Chignon touches letter Y. Small letters; figures of the date are large and perfect. Brass. R. 1.

20. Obv. Same as No. 19. Rev. Same as No. 18. Brass. R. 7.

21. Obv. Laurel wreath has two top leaves. Star-shaped button fastening drapery. Small acorns to the wreath. This is the only bust among the counterfeit half pennies with locks of hair on neck. Rev. The braid of hair around female head resembles a fillet. Two large daisies in cornucopia. Either found with or without defects at letters F P. Copper. R. 4.

22. Obv. Same as No. 21. Rev. The top of female head is below and very close to letter Y; chignon is to the right of this letter. Three daisies in cornucopia. Top of letter P is recut to the right. Thick and thin flans. Copper. R. 1.

23. Obv. Same as No. 22, but struck in brass. R. 6.

24. Obv. The face has a large, protruding nose. Laurel wreath has four top leaves, the two from the left show only the tips. The ribbon ends are of equal length. Circular rosette fastening drapery. Large acorns to the wreath. Rev. Same as No. 22. Copper. R. 1.

25. Obv. Laurel wreath has four top leaves; rosette fastening drapery shows four dots. Letter H on truncation. Rev. Female head with coronet. Two apples in cornucopia. Letter H on ground to the right. Only half of the female's right leg shows. No cannon balls touching left section of bale of goods. Engrailed edge. Copper. R. 2.

26. Obv. Same as No. 25. Rev. Same as No. 25, but two-thirds of the female's right leg shows. A cannon ball touches bale of goods left section. From a strange impression. Copper. R. 2.

27. Obv. Laurel wreath has two top leaves, the left the longer. Rosette fastening drapery shows six dots. Letter H on truncation. Rev. The female head is plain. Two apples and two cherries in cornucopia. No letter H on ground. Engrailed edge. Copper. R. 2.

PENNIES.

In giving the description of these tokens, I shall begin with coins bearing the date on reverses only, those on obverses, then with those having the date on both sides. One has none.

Dated On Reverses.



No. 28.

28. Obv. Bust to right within an endless wreath of oak leaves, laureated with seven leaves, two at top. Without letter H on truncation. The acorn below point of bust emerges from inner leaf. From perfect and rusted dies. Rev. Similar. ONE PENNY TOKEN . 1812. The female

head is relatively small. The left plate of scales is opposite the letter O, the only instance in which this occurs. Without letter H on ground. Found either with engrailed or obliquely milled edge. R. 7. 7 leaves.

The pennies of this series are all struck in copper.

29. Obv. Bust laureated with eight leaves, three at top. Without letter H on truncation. The acorn below point of bust emerges from middle leaf. From a rusted die. Rev. Same as No. 28. R. 9. 8 leaves.



Reverse of No. 30.

30. Obv. Same as No. 29. Rev. Female facing to left seated on a shield bearing the Union Jack, a laurel sprig in her right hand, a palm in her left. COMMERCE. In exergue, 1814. Either found with engrailed or oblique milled edge. From rusted die. R. 6. 8 leaves.

31. Obv. Bust laureated with ten leaves; its point touches oak wreath. Circular rosette fastening drapery. Letter H on truncation to No. 40 inclusive. Rev. Same as No. 28, but the left plate of scales hereafter is opposite the letter N. Two apples between two cherries in cornucopia, one on lower leaf. Letter H on ground to the right is horizontally placed. Engrailed edges to No. 40 inclusive. R. 5. 10 leaves.

32. Obv. Bust laureated with eleven leaves. The lower loop of ribbon bow partly overlaps the upper one. Oval rosette fastening drapery. The oak leaves are small and compact. Rev. Same as No. 31, but a large apple below two cherries in cornucopia; a third cherry on middle leaf; letter H on ground stands upright. R. 4. 11 leaves.

33. Obv. Bust laureated with twelve leaves; the upper loop of ribbon bow partly overlaps the lower one. Large oval rosette fastening drapery. Rev. In cornucopia, two cherries between two apples. Letter H on ground horizontally placed. R. 5. 12 leaves.

Dated On Obverses.

34. Obv. Bust within a divided wreath. 1812. Small, oval rosette fastening drapery. Two acorns below truncation. In the date the tops of figures 1 are double cut; the first is below band of drapery. Rev. Similar. Without date. In cornucopia, an apple below three cherries; four leaves in same, the second from bottom is weakly struck, only point shows. Letter H on ground stands upright. R. 2. Small vessel variety.



Obverse of No. 36.

35. Obv. Same as No. 34. Rev. Closely resembles No. 34, but two leaves instead of four in cornucopia, and the fold of female's dress below left arm is wider and shorter. Battleship in place of a small vessel to the

left. The stand or ceriph of N of TOKEN is double cut. R. 9. Battleship variety.

36. Obv. Same bust as on No. 34, but surrounded by the French legend, BON POUR DEUX SOUS (One penny token), instead of a wreath. 1812. Rev. Same as No. 34. R. 10.

37. Obv. Bust within a divided wreath. 1813. Large oval rosette fastening drapery. The oak branches begin with leaves. Rev. In cornucopia two apples below two cherries, a third one on lower leaf. The only variety with a straight reverse. R. 6. Oval rosette.

38. Obv. Same as No. 37. 1813, but the rosette fastening drapery is circular and the oak branches begin with acorns. Rev. In cornucopia five cherries around an apple, forming a semi-circle. R. 6. Circular rosette.

Dated On Both Sides.

39. Obv. Bust within a divided wreath. 1812. The left terminal oak leaf almost touches the recut of right one. In the date, the tops of figures 1 are double cut, the first is below band of drapery. (Same as No. 34.) Rev. 1812. In cornucopia two cherries between two apples. Letter H on ground is horizontally placed. (Same as No. 33.) R. 5. Close wreath.

40. Obv. Closely resembles No. 39, but the last oak leaves are away from each other and the figures 1 are perfect; the first is below H on truncation. Rev. Same as No. 39. R. 5. Open wreath.

Undated.



Reverse of No. 41.

41. Obv. Bust laureated with eight leaves, three at top. Without letter H on truncation. The acorn below point of bust emerges from middle leaf. From a perfect die. (Same as No. 29.) Rev. Female facing to left, seated on a bale of goods, laurel sprig in her right hand, a cornucopia in her left. Broken planks on right of ground. COMMERCE. No date. Oblique milling on edge. R. 8. The undated variety.